

Content

Warranty.....	2
Purpose.....	2
Requirements	2
Cross-browser	3
Summary	3
Place your files in NetTG directories.....	4
Upload NetTG files to a web server.....	5
The connection to the database	6
Automatic connection	6
Manual connection	6
Disconnection from the database	9
Web pages	10
nettg.....	10
nocon.aspx.....	10
instruction.aspx	11
dataf.aspx	12
test.aspx.....	13
receipt.aspx	14
login.aspx	14
setup.aspx	14
statistics.aspx.....	15
fields.aspx	15
properties.aspx	15
language.aspx	16
options.aspx.....	16
keyboard.aspx	17
about.aspx	18
error pages.....	18
Background process	19
Security	19
Backup	20
Version info.....	20

Warranty

THIS IS A FREWARE SOFTWARE

NO WARRANTY

THIS COMPUTER SOFTWARE IS DISTRIBUTED IN THE HOPE THAT IT WILL BE USEFUL, BUT WITHOUT ANY WARRANTY. IT IS PROVIDED "AS IS" WITHOUT WARRANTY OF ANY KIND, EITHER EXPRESSED OR IMPLIED, INCLUDING, BUT NOT LIMITED TO, THE IMPLIED WARRANTIES OF MERCHANTABILITY AND FITNESS FOR A PARTICULAR PURPOSE. THE ENTIRE RISK AS TO THE QUALITY AND PERFORMANCE OF THIS SOFTWARE IS WITH YOU. SHOULD THE SOFTWARE PROVE DEFECTIVE, YOU ASSUME THE COST OF ALL NECESSARY SERVICING, REPAIR OR CORRECTION.

Purpose

The basic purpose: Run the WinTG.mdb database (survey, questionnaire, test, quiz, exam) on the asp.net web server.

The general purpose: quickly store information in a database on the basis of a set of available options on the Internet (Intranet).

Requirements

Web server requirements:

- Target framework: .NET Framework 4.5 (asp.net 4.5). Minimum: 4.0
- Access (Microsoft Jet 4.0 Database Engine) support
- Permits execute an operations in a separate thread (separate background process is used to store data in database)

Client (users) requirements:

- Java script must be enabled (jQuery)

WinTG.mdb* database requirements:

- Minimum WinTG.mdb database version: 2.1
- test (survey, questionnaire, quiz, exam) must be in Locked (valid) state

* WinTG.mdb = the Access database is created within freeware WinTG desktop application.

To fully understand all of the terms set out below is necessary to know the concepts taken from WinTG desktop application.

Cross-browser

This web application has been tested on the following web browsers:

- Internet Explorer (8)
- Firefox (14.0.1)
- Chrome (26.0.1410.64 m)
- Opera (12.15)
- Safari (5.1.7)

Mobile browsers: we have no information.

Summary

To properly use this web application, you must complete the following steps:

- **Place your files in NetTG directories**
- **Upload NetTG files to a web server**
- **Connect to Access database.**
- **You must make a disconnection with the database when you finish with work** (no longer wish to use this database to the web server). Only then you can delete the database(s) from a web server, and delete the entire application (all NetTG files).

Place your files in NetTG directories

Before uploading the files to the asp.net web server insert (put, copy/paste) your files in the following directories:

- **Necessary:** (All) Access database(s) insert inside the **App_Data** folder. If any of the Access file has the name **wintg** (wintg.mdb) this will result in automatic connection to that database. Access files can be inserted into **App_Data** directory after you upload all NetTG files on asp.net web server but then generally you can not always use an automatic connection to the database.
- **Optional:** If you use the instructions files (files containing written instructions to the person who writes the survey), insert text files with instructions inside the **instruction** folder. Name the file with the instruction must be the same file name with the instruction as defined within WinTG desktop application. The path of this file is not important, important is only the file name.

For example, if you are within the WinTG desktop application defined file with instructions: c:\my_documents\my_folder\my_instruction.txt.

Just insert my_instruction.txt file within the **instruction** directory. Its contents will automatically be shown on **instruction.aspx** website. Otherwise, instruction.aspx page will not be displayed to the user. Support only txt files (not. rtf). See:

instruction.aspx

- **Optional:** If you want to change the look of the home page of the NetTG site, upload your images within the directory: **home_images**. See: **nettg.aspx**

Upload NetTG files to a web server

Use FTP to upload (download) NetTG files to asp.net web server.

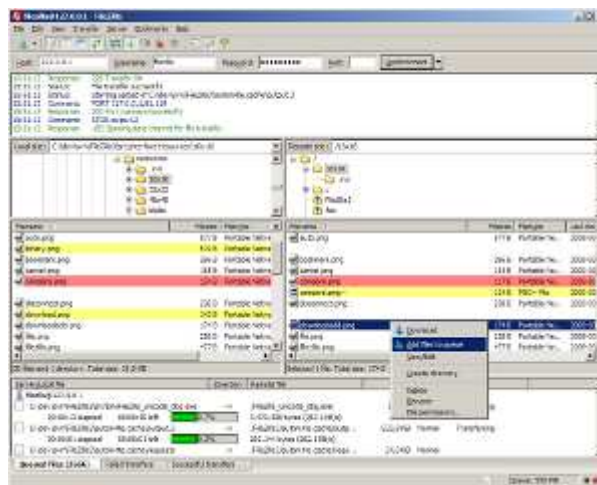
File Transfer Protocol (FTP) is a standard network protocol used to transfer files from one host to another host over a TCP-based network, such as the Internet.

You can use any FTP program that you want. For example FileZilla is one such program.

FileZilla is free and cross-platform FTP software. You can find it easily on the web.

Most of today's FTP software allows you to transfer these files to the desired web server with just a few mouse clicks.

FileZilla in action



The connection to the database

If you want to use this asp.net web application you must do connection to the Access database on the web server. It can be done automatically or manually.

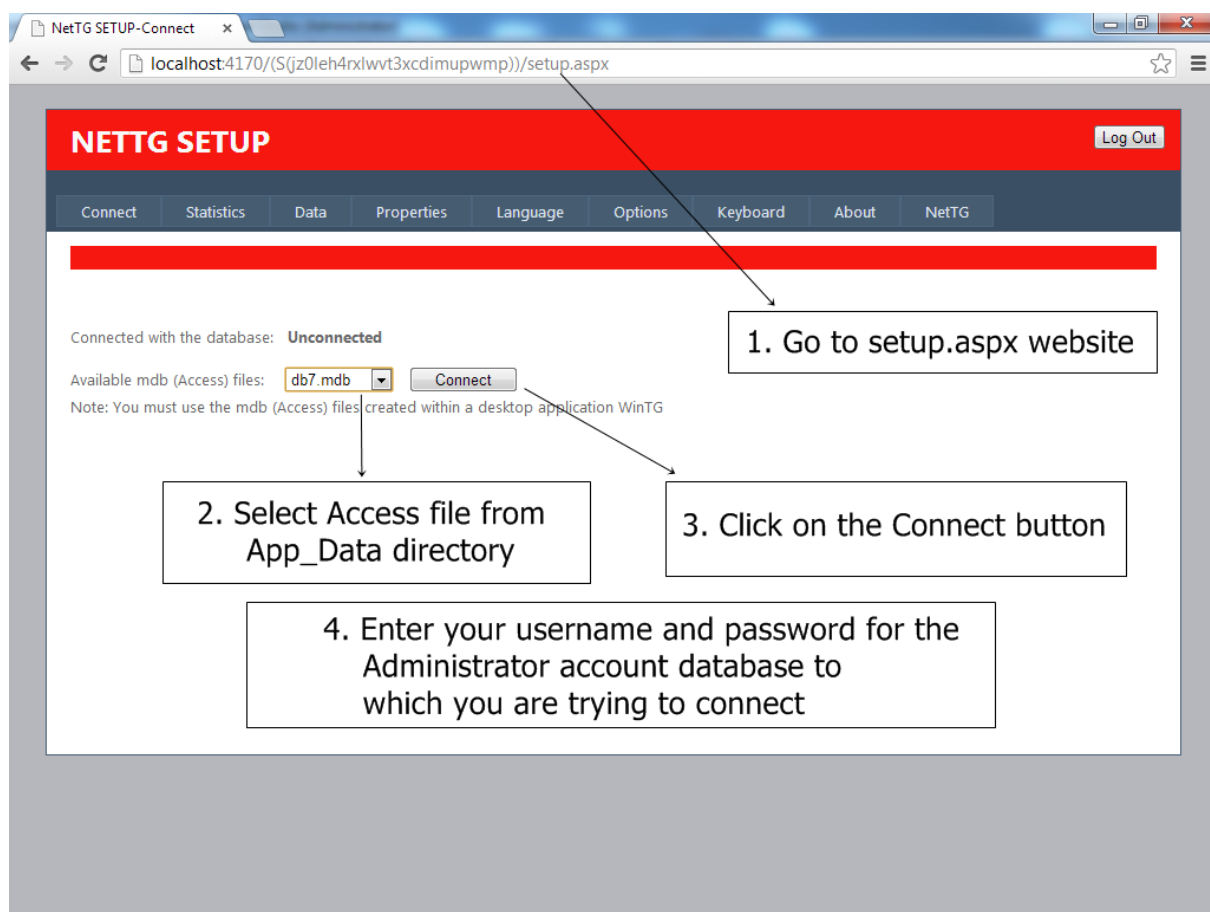
Automatic connection

Create Access database using WinTG desktop application, lock the test, **and just insert (put, copy/paste, upload) such a database in the **App_Data** directory**. The database must have a name **wintg**. We recommend using automatic connection as often as possible because it can achieve a stable connection to the database. Note: Windows servers are case-insensitive (wintg.mdb = WINTG.mdb = WinTG.mdb).

Manual connection

Manual connection must be done within a website **setup.aspx**. Enter the web address manually by replacing the last part of the URL character string. For example:

change this: `http://www.my_address.com/(S(jz0leh4rxlwvt3xcdimupwmp))/nettg.aspx`
into this: `http://www.my_address.com/(S(jz0leh4rxlwvt3xcdimupwmp))/setup.aspx`
(do not touch anything else in the web address)



If NetTG application is **not currently connected** to any database: the web page will write

Status: Unconnected
and this web page will have a red header (the red line).

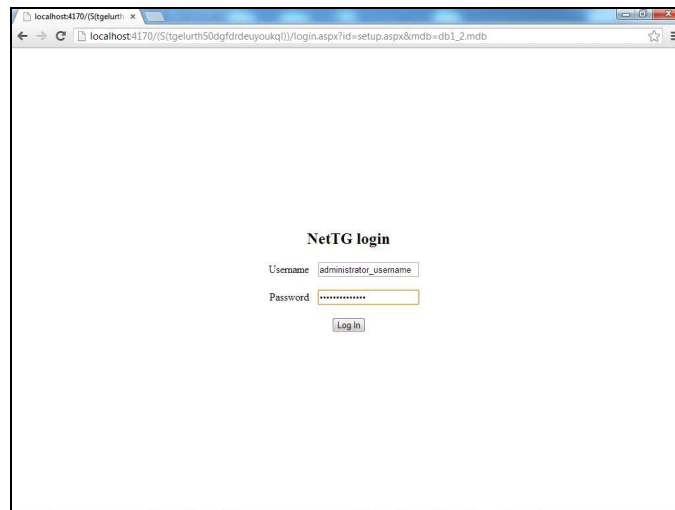
If NetTG application is **currently connected** to the database: the page will write

Connected with the database: file_name.mdb
and this website will have a green header (green line).

From the Combo box select the corresponding database that you previously insert (upload) in App_Data directory on the web server.

WinTG database requirements: database version: >= 2.1 and Test (exam, questionnaire, quiz, survey) must be in Locked (valid) state.

Click on Connect button.



localhost:4170/(S(tgclurth50dgrfdrdeuyoukq1))/login.aspx?rid=setup.aspx&umdb=db1_2.mdb

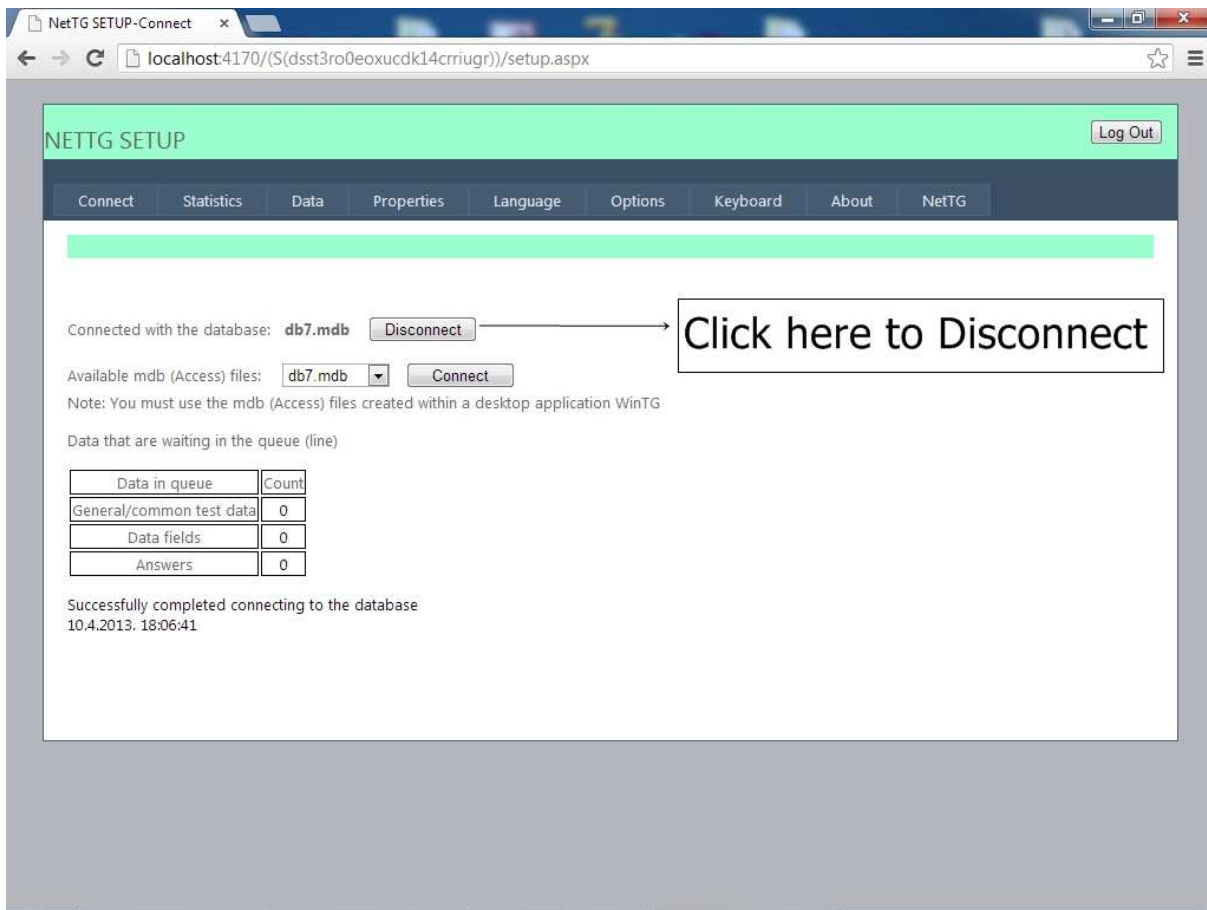
NetTG login

Username: administrator_username

Password:

Log in

After a warning will be transferred to the NetTG login page where you must enter a user name and password for an administrator account that belongs to the database you are trying to connect. If you enter the correct user name and password when you click on the **log in** button NetTG application **will connect to that database.**



When you absolutely must do a manual connection:

- when you want to switch from one database to another on the web server (you use multiple databases on the web server)
- when you use a database that has a name different from: wintg
- if you update the database within the WinTG desktop application and you wish to update the new settings on the web server
- in all other cases in which the automatic connection failed.

If this web page shows the button **Disconnect** (ie, the application is already connected to another database), first click on the **Disconnect** button to disconnect from the existing database, and then do a connection to another database.

In case you notice the loss of connection during operation of the web applications **we recommend the use of an automatic connection allowing you to achieve a permanent connection to the database.**

Data that are waiting in the queue (line)

To enable as many users simultaneously access the database, this web application uses the asynchronous data storage, that data is not stored in the Access database immediately, but with time delays. If any of the numbers in the second column of the table $\text{Count} > 0$ it is necessary to wait for some time (in most cases need only a few seconds - press F5 key to refresh the web page) before connecting (disconnect) to the database. **Therefore, do not click on the button Connect or Disconnect if any Count > 0.** Otherwise, you will lose all the data in queue.

Disconnection from the database

When you're finished with work, or do not wish to use the current Access database, you **must** perform the disconnection. **Disconnection MUST always be done manually.** Disconnection is done manually on setup.aspx website. The procedure is as follows:

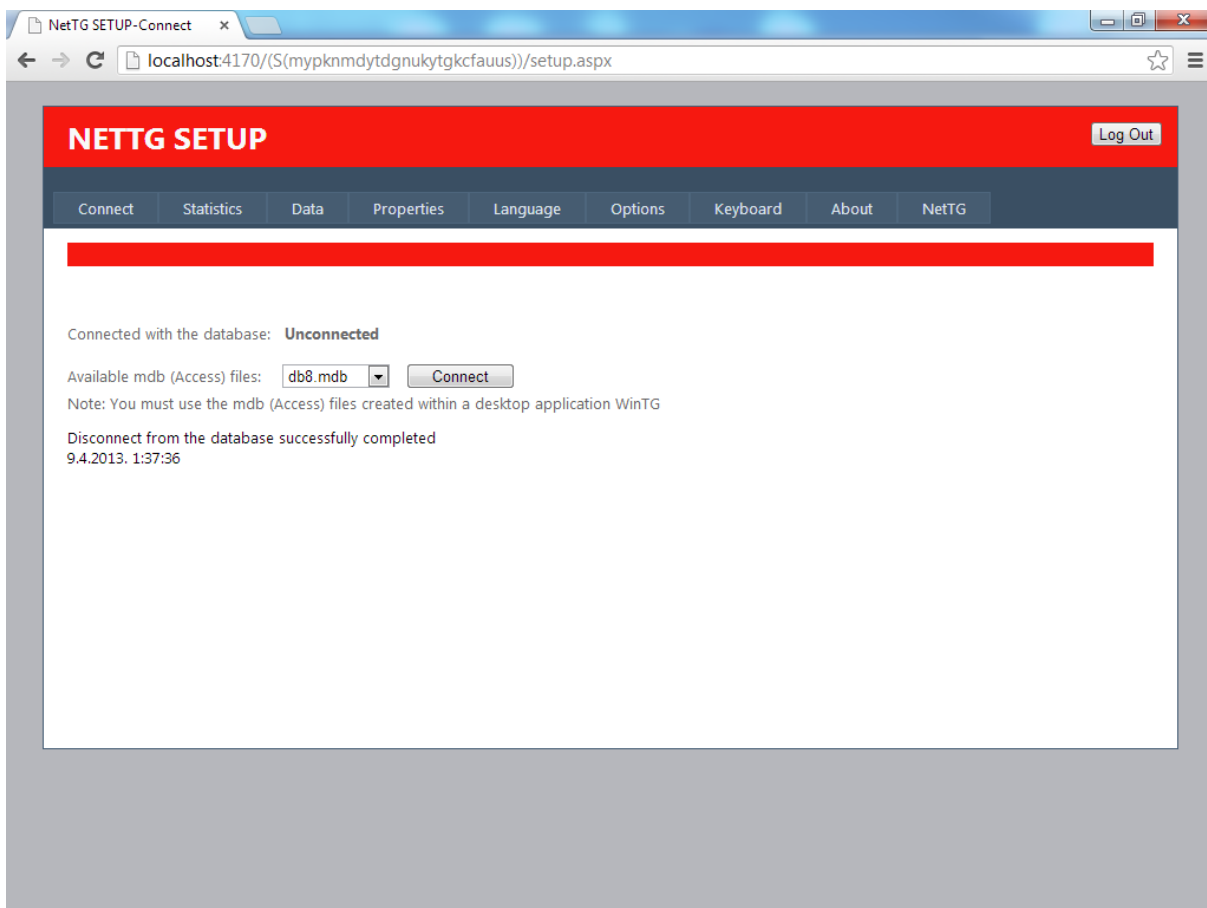
Be sure to make a disconnection especially when:

- **before deleting the database from the server**
- **transition from one to the other Access databases**
- **when you want users can no longer use NetTG application**

The procedure is as follows:

1. Go to the **setup.aspx** web page. (see Manual connection). If NetTG application is currently connected to the any database this web page will have a green header (green line) and button Disconnect will be visible.
2. Make sure that all **Data in queue** have **Count** = 0
3. Click on the **Disconnect** button

Result of disconnection shall be as follows:



Web pages

NetTG web application consists of the following web pages. Some of them are intended for all users and some are intended only to administrators who maintain the website.

nettg

This is the main web site (home page). If you want to change the images that appear on this web page, change the contents of the **home_images** directory. In **home_images** directory insert (upload) the images you want. Supported graphic image formats are: "*.jpg|*.gif|*.png|*.bmp". If there are more pictures, nettg.aspx page will display images generated by the case (randomized generated) from **home_images** directory. If within **home_images** directory already > 5 image files, images will automatically change every 5 seconds.

Within **home_images** directory is a special file **background.jpg**. It sets the background color of nettg.aspx website. You can modify the whole content but the name and file type must remain the same (background.jpg).

nocon.aspx

This web page will always be displayed to the user if the NetTG application is not connected to a database.

nocon.aspx in action



Currently you can not use the application because it is not initialized or is just now changing



instruction.aspx

This web page displays instructions file (files containing written instructions to the person who writes the survey) if it is defined in the database and if the txt file that name exists in the **instruction** directory on the web server. Appearance of this web site is determined by the settings defined within WinTG desktop application.

If you use the instructions files, insert text files with instructions inside the **instruction** folder. The file name must be the same one as defined within the WinTG desktop application. The path of this file is not important, important is only the file name.

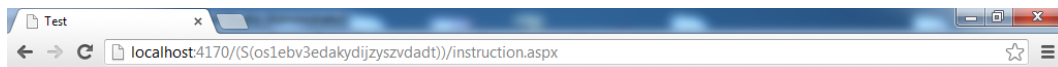
For example, if you are within the WinTG desktop application defined file with instructions: c:\my_documents\my_folder\my_instruction.txt.

Just insert my_instruction.txt file within the **instruction** directory. Its contents will automatically be shown on **instruction.aspx** website. Otherwise, instruction.aspx page will not be displayed to the user. Supports only text (.txt) file format (not. rtf).

If the NetTG application is not connected to a database, the user will be redirected to a **nocon.aspx** (instruction.aspx will not be displayed).

This page may require the identification of users if it is so defined within WinTG desktop application.

instruction.aspx in action (this is just one example)



NO WARRANTY

THE PROGRAM IS DISTRIBUTED IN THE HOPE THAT IT WILL BE USEFUL, BUT WITHOUT ANY WARRANTY. IT IS PROVIDED "AS IS" WITHOUT WARRANTY OF ANY KIND, EITHER EXPRESSED OR IMPLIED, INCLUDING, BUT NOT LIMITED TO, THE IMPLIED WARRANTIES OF MERCHANTABILITY AND FITNESS FOR A PARTICULAR PURPOSE. THE ENTIRE RISK AS TO THE QUALITY AND PERFORMANCE OF THE PROGRAM IS WITH YOU. SHOULD THE PROGRAM PROVE DEFECTIVE, YOU ASSUME THE COST OF ALL NECESSARY SERVICING, REPAIR OR CORRECTION.

IN NO EVENT UNLESS REQUIRED BY APPLICABLE LAW THE AUTHOR WILL BE LIABLE TO YOU FOR DAMAGES, INCLUDING ANY GENERAL, SPECIAL, INCIDENTAL OR CONSEQUENTIAL DAMAGES ARISING OUT OF THE USE OR INABILITY TO USE THE PROGRAM (INCLUDING BUT NOT LIMITED TO LOSS OF DATA OR DATA BEING RENDERED INACCURATE OR LOSSES SUSTAINED BY YOU OR THIRD PARTIES OR A FAILURE OF THE PROGRAM TO OPERATE WITH ANY OTHER PROGRAMS), EVEN IF THE AUTHOR HAS BEEN ADVISED OF THE POSSIBILITY OF SUCH DAMAGES.

Continue

dataf.aspx

This web page shows the user-defined data fields (data1..dataN) in the way it is defined within WinTG desktop application. If this user-defined data field does not exist, this page will not be displayed. This web page performs basic validation of data as it is defined within the WinTG desktop application. The design of this site is completely defined by the settings in the WinTG desktop application (although this can be partially changed in the server - see options.aspx).

If the NetTG application is not connected to a database, the user will be redirected to a **nocon.aspx** (dataf.aspx will not be displayed).

This page may require the identification of users if it is so defined within WinTG desktop application.

dataf.aspx in action (this is just one example)

my string 1 (required field)

my string 2 (required field)

my integer

my float

my boolean ☒

my string 3 (required field)

Errors found:

- This field is required: my string 1 (required field)
- This field is required: my string 2 (required field)
- Field my integer must be integer
- Field my float must be real number (decimal)
- This field is required: my string 3 (required field)

test.aspx

This web page shows the test (survey, questionnaire, quizz, exam) content from the first to the last question on the test. Web page look is defined within WinTG desktop application (although this can be partially modified on the server - see options.aspx).

You must take into account the settings you define within WinTG desktop application. For example, if you turn on (enabled, checked) the "User Identification" option, users will not be able to access web pages without typing user name and password and related privileges. If the timer is active (enabled, checked) time for the survey will be limited...

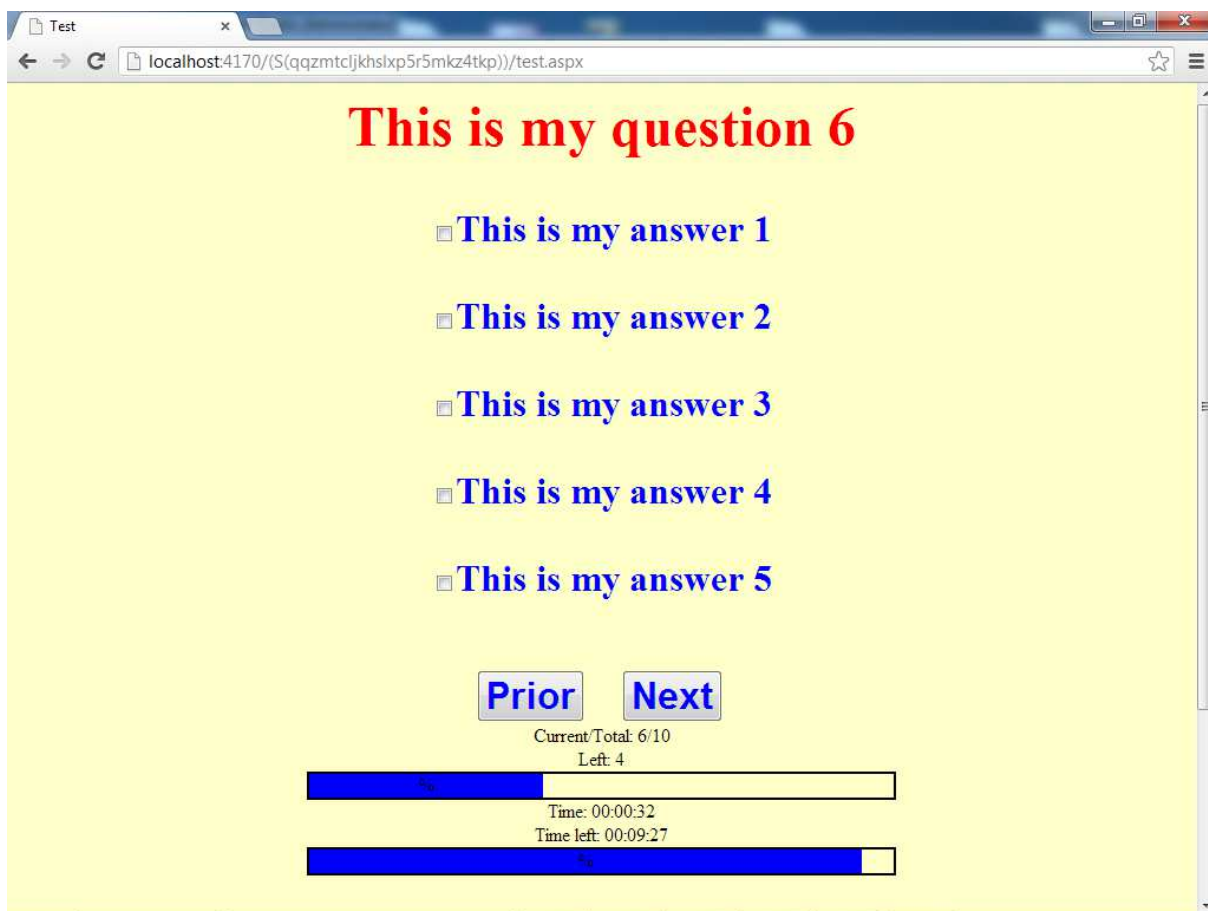
Note: if the text answers have a single ' or double quotes " such answer will always be displayed as a button, no matter how it is defined within WinTG desktop application. So if you need to use single or double quotes as the type of response always use a "Button".

Appearance of this web page may vary significantly based on the settings defined within WinTG desktop application.

If the NetTG application is not connected to a database, the user will be redirected to a **nocon.aspx** (test.aspx will not be displayed).

This page may require the identification of users if it is so defined within WinTG desktop application.

test.aspx in action (this is just one example)



receipt.aspx

This page displays a message on completion of the survey. Text to be displayed to the user is defined within the WinTG desktop application (Language tab). On this page are displayed some errors messages (database does not exist on the defined address or background process is not active).

login.aspx

On this page you will always be transferred if the web page you previously requested requires identification. Here you need to enter your user name and password as it is defined within WinTG desktop application. If you want to access web pages belonging NetTG setup portal (setup.aspx, statistics.aspx, properties.aspx,..) then you need to enter a username and password for the Administrator account.

These pages require identification if there is currently a connection to the database:

setup.aspx, statistics.aspx, fields.aspx, properties.aspx, language.aspx, options.aspx, keyboard.aspx, about.aspx.

If there is no active connection to the database then this web sites does not require identification.

Therefore, **when you are finished working with the mdb database and no longer wish to use the application, perform the disconnection (required), download the database from the server and delete the all the databases from App_Data directory.**

Explore related topics: **Security**.

These pages require identification only if the within WinTG desktop application **User identification** option is selected (checked, enabled, marked):

instruction.aspx, dataf.aspx, test.aspx.

In this case, if the user wants to access this web sites must also meet all of these conditions:

Permissions

- Active = true
- Run Test = true (or administrator account)

setup.aspx

This page has already been explained in the following chapters: The connection to the database, Disconnection from the database.

On this page, perform the connection or disconnection with the database. Also this page shows the Data that are waiting in the queue for storage.

This page requires identification, so to access this page you need to enter the username and password that corresponds to the administrator account mdb database with which web application is currently connected. The exception is the case when the application is not connected to any database. Then it can be accessed by anyone, but then it does not display any information about the database.

Explore related topics: **Security**.

statistics.aspx

This page shows the basic statistics regarding the NetTG application. The first table shows statistical information about the database (questionnaire, test, exam, quiz, survey). The source of information is always current state of the mdb file. Therefore, in this table, you can read how many users fulfilled by the end of your survey, ie what is the current state of the mdb database on the server.

The second table shows the Data that are waiting in the queue and their number. **Do not perform the connection / disconnection with the database while any Count > 0.** This has already been discussed in Chapters: The connection to the database, Disconnection from the database.

The third table shows the number of errors that occurred during work NetTG application. In the longer practice there will always be some errors count > 0, because some errors are related to the user or network. However, the first fourth* errors are important because they indicate that all data are not successfully stored in the database on the server. The cause of these errors depends on many factors and it is difficult to identify them uniquely.

* Pay attention to the occurrence of these errors (if Count > 0):

Number of errors in the transmission of data

Number of errors when recording data (common data)

Number of errors when recording data (data fields)

Number of errors when recording data (answers)

Web page statistics.aspx requires identification, so to access this page you need to enter the username and password that corresponds to the administrator account mdb database with which the web application is currently connected. The exception is the case when the application is not connected to any database. Then it can be accessed by anyone, but then it does not display any information about the database.

fields.aspx

This page displays basic information about the user-defined data fields (data1.. dataN) according to the settings defined in the mdb database to which the web application is currently connected. The content of these user-defined data fields is defined in the WinTG desktop application. This user-defined data fields are displayed on dataf.aspx page. If NetTG application is not connected to the database this web page is "empty".

This page requires identification, so to access this page you need to enter the username and password that corresponds to the administrator account mdb database with which the web application is currently connected. The exception is the case when the application is not connected to any database. Then it can be accessed by anyone, but then it does not display any information about the database.

properties.aspx

This page displays basic information on the characteristics of the questionnaire (quiz, survey, exam, test) according to the settings defined in the mdb database to which the NetTG application is currently connected. The contents of these characteristics is defined according to the settings defined within WinTG desktop application (Properties tab). If NetTG application is not connected to the database this web page is "empty".

This page requires identification, so to access this page you need to enter the username and password that corresponds to the administrator account mdb database with which web application is currently connected. The exception is the case when the application is not connected to any database. In this case web page properties.aspx can be accessed by anyone, but then it does not display any information.

language.aspx

This page displays basic information on the characteristics of the questionnaire (test, exam, quiz, survey) according to the settings defined in the mdb database to which the application is currently connected. The contents of these characteristics is defined according to the settings defined within WinTG desktop application (Language tab). If NetTG application is not connected to the database this web page is "empty".

This page requires identification, so to access this page you need to enter the username and password that corresponds to the administrator account mdb database with which web application is currently connected. The exception is the case when the application is not connected to any database. In this case web page language.aspx can be accessed by anyone, but then it does not display any information.

options.aspx

On this page there are some options that allow you to modify some of the properties of the questionnaire (survey, quiz, exam, test) on web server. Click the button "**Save**" to save the changes.

Disable all styles from mdb database

If you choose this option, all fonts, colors and alignment of text that are stored in mdb database will be ignored and will be shown the default styles that depend on the type of browser used by the client. Use this option if you are dissatisfied with the web pages design.

Enable dynamic clock

This option is enabled only if you are simultaneously met all of these conditions:

- timer is enabled
- bottom panel is visible
- Last answer is editable = false (not selected, not checked)
- Progress bar showing time must be visible (at least one of the two strings tied with Time progress bar must have Length > 0).

If you have not met all the requirements mentioned above this option is disabled.

Use this option with a grain of salt. This option should be used only in cases of rapid network traffic. If you notice freezing screens, blinking screen or a significant slowing down of this application, do not use (don't check) this option.

For example: if you choose **Enable dynamic clock** = 5s then web page **test.aspx** will be automatically sent to the web server to check the time and will automatically refresh time Progress bar (in practice this will not happen every 5s because it takes some time to travel sites from local computer to the web server and back, and the time for processing the page on the server).

If you are using a timer in the test, on each client request, time is always checking on the web server, and every client answer arrives at the web server after the time allowed for the duration of the exam will be rejected (like in WinTG desktop application).

Web page options.aspx requires identification, so to access this page you need to enter the username and password that corresponds to the administrator account mdb database with which web application is currently connected. The exception is the case when the application is not connected to any database. Then it can be accessed by anyone, but then it does not display any information. Explore related topics: **Security**.

keyboard.aspx

This page displays basic information about the meaning of each key on the keyboard within NetTG application, according to the settings defined within WinTG desktop application (Keyboard tab). This web page provides information that the keyboard is enabled or disabled. If keyboard **is enabled**, The same rules apply as in the WinTG desktop application.

Keyboard rules - selection of answers

Press the appropriate key on the keyboard to select an answer. If you want to cancel the previously selected answer, **press the same keyboard key again** (if necessary return to the previous item). If *Allow multiple answers* is not checked (selected) then if you select any answer within question, it will automatically delete all other pre-selected answers within the same items. Check the WinTG manual for details.

Mouse is always working. **Click** on the corresponding widget (control) to select an answer. If you **click again** on the same widget, the answer will be canceled (deleted).

If the screen shows Text Box (this item is editable) you can not use the keyboard to select the answer in this question (but you can use the navigation keys: Up Arrow, Down Arrow, CTRL+HOME, CTRL+END if it is allowed). Pressing ENTER key inside the Text Box control means moving on to the next question if it is allowed.

Keyboard rules - navigation between items

- **Down Arrow key** (Right Arrow key) - move to the **next** question in the test. If option *Allow no answers* is off (not selected) the program does not allow the move to the next question in the test before answering this question (person should choose at least one answer). Check the WinTG manual for details.
- **Up Arrow key** (Left Arrow key) - move the **previous** question in the test.
- **CTRL+END** - quick move to the **last** question in the test. This is possible only if *Allow no answers* is on (selected).
- **CTRL+HOME** - quick move to the **first** question in the test.

If the keyboard is on, move "back" is always allowed. Move "forward" depends on *Allow no answers* option. Check the WinTG manual for details.

The keys in parentheses (Right Arrow key, Left Arrow key) can be used only if the current item on the screen does not contain a Text Box (text entry box, Edit box), that is: this item is not editable. Down Arrow key and Up Arrow key are always working (if the option *Enable Keyboard* is on/checked).

Tip: NetTG application requires the use of Java Script enabled in the client. Disable the use of the keyboard if you experience any problems during operation of this web application (eg mobile devices).

Page keyboard.aspx requires identification, so to access this page you need to enter the username and password that corresponds to the administrator account mdb database with which web application is currently connected. The exception is the case when the application is not connected to any database. Then it can be accessed by anyone, but then it does not display any information.

about.aspx

Displays basic information about the NetTG application.

error pages

These pages will be displayed only in case of some errors:

- DefaultRedirectErrorPage.aspx
- Http404ErrorPage.aspx
- HttpErrorPage.aspx
- SystemDataErrorPage.aspx
- SystemIOErrorPage.aspx
- GenericTestErrorPage.aspx

These pages will be displayed to user only in case of some errors. We sincerely hope you will see them as little as possible. Better not to know that they exist.

Background process

This web application uses a background process (BackgroundWorker) to store data in a Access database. The cause of this is the fact that Access database is not designed for parallel operation with a large number of users (and this is a characteristic of the Internet). Therefore, the data recorded in the database with a time delay (asynchronous). In computer programming, asynchronous events are those occurring independently of the main program flow, allowing the main program flow to continue processing. If this web application does not use this mechanism, this would probably lead to slowing of web application, especially in the case of simultaneous operation with a large number of users. Web server that you set (upload) this application must allow the operation (use) of such a background process. This background process is constantly active.

If there is a error occurred when storing data in the database (for example, database is not present at a defined location), **these data is deleted from the server and have been irretrievably lost** (such errors can be seen at: statistics.aspx).

As previously discussed, *Data that are waiting in the queue (line)* are shown on pages setup.aspx and statistics.aspx. **Never perform a connection or disconnection with the database while there are data waiting in queue (otherwise you will lose this data).**

Security

Security is not a strong point of these types of applications, including this application.

It is very difficult to make a web application that will be flexible, easy to use and also safe from hackers.

Most important: NEVER NEVER NEVER store the information that someone could misuse (sensitive and private information). This application is designed to generate quizzes, surveys, questionnaires, tests, and not to collect information that someone might misuse it. Therefore, if you plan to use this application, for example to collect credit card information or any banking information, I suggest you visit your doctor previously.

Remember that it is always much easier to destroy than to build something. Malicious hackers if they want to steal or destroy data from this web application, they can do it.

If hackers (in the computer security context, a hacker is someone who seeks and exploits weaknesses in a computer system or computer network.) can break into some of the best-protected websites in the world, this web site they certainly will not be a significant challenge.

In this case it is much more important question: Why would they do that?

However to reduce the risks you must follow the following set of rules:

- Do not use unnecessary **App_Data** directory as a warehouse. When you are done (with database), make sure you have a database **disconnection, download** a database on your computer and **then delete** database from App_Data folder. If less time to keep a database on the server, then the risks are slightly lower.
- All databases must be located in the **App_Data** directory. Web server prevents any client request into the contents of App_Data (non-downloadable files). All other private information must be located there. Some web servers allow you to use a special protected web directories to store private data, so it is better to use these directories.
- All data files in directories **instruction** and **home_images** are not protected (not sure).

- *Last answer is editable* option (see WinTG desktop application). It is better not to use the answers entering text (Text Box) because they represent a security risk. That's why we left the default settings that protect web server from entering dangerous characters. If for example the user types text "<asp" or "" in Text box, he will be denied on the server and the user will be shown a warning from the server. This is normal behavior. This will not come up if the user uses the alphanumeric characters that are commonly used: a..z or 0..9. In the Text Box the user can not write asp and html tags. Should generally avoid answers that start with "<".
- Also, there is less risk if you do not use user-defined data fields with Text Box
- This web application does not use CAPTCHA because its use would be impractical, especially in the case of a large number of questions. A captcha is a type of challenge-response test used in computing as an attempt to ensure that the response is generated by a human being.
- If the application is using the intranet environment, you have less risk.

Backup

You are responsible for backing up your data on the web server. Some commercial asp.net web servers offer the option of automatic backups.

Version info

NetTG



Version 1.0

This software uses (compatible with) a WinTG database version 2.1

Behaviour Brain Research 2013
behaviour.brain.research@gmail.com

This is a freeware software